



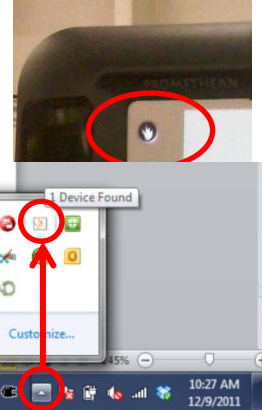
# Setting Up the Year 3 MultiTouch ActivBoard 500

Follow these directions to set up your Year 3 MultiTouch ActivBoard 500. There are some options available to you in order to have the greatest control over the touch capabilities of your new Promethean board.

## Setting up Your Computer for Touch

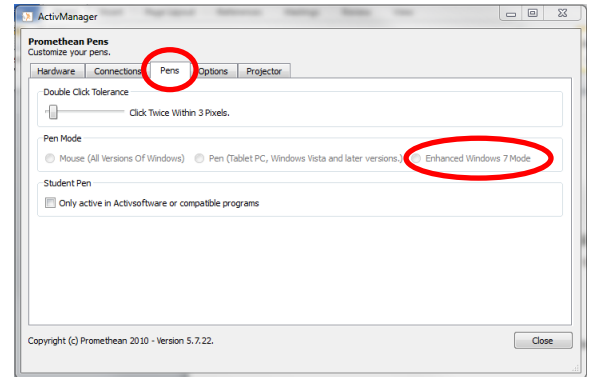
1. Ensure your computer is connected to the Promethean Board by locating the white flame in the upper left corner of the board.

*If the flame is dark, or a color other than white, the board and computer are not connected. Ensure the USB and VGA cables are connected properly. When you connect, the light will flash colors for 15-20 seconds before settling on solid white. Don't touch the board while it goes through this process.*



2. Click on the white triangle on the bottom right-hand side of your taskbar to open the window displaying the programs currently running. Find the ActivManager icon—it looks like a white rectangle. Click the icon and choose “Control Panel” from the menu.

3. On the Control Panel, click on the “Pens” tab. Click on “Enhanced Windows 7 Mode”  
A pop-up will tell you to reboot. Just click “OK” to get rid of it. Click the “Close” button at the bottom corner of the Control Panel.



4. You will need to re-set the board for these changes to take place. To do this, simply unplug the Promethean USB from your computer. Wait three seconds, and plug it back into your computer. The light in the upper left-hand corner of your Promethean Board will once again flash colors for 15-20 seconds. When it is solid white, you are ready to go!

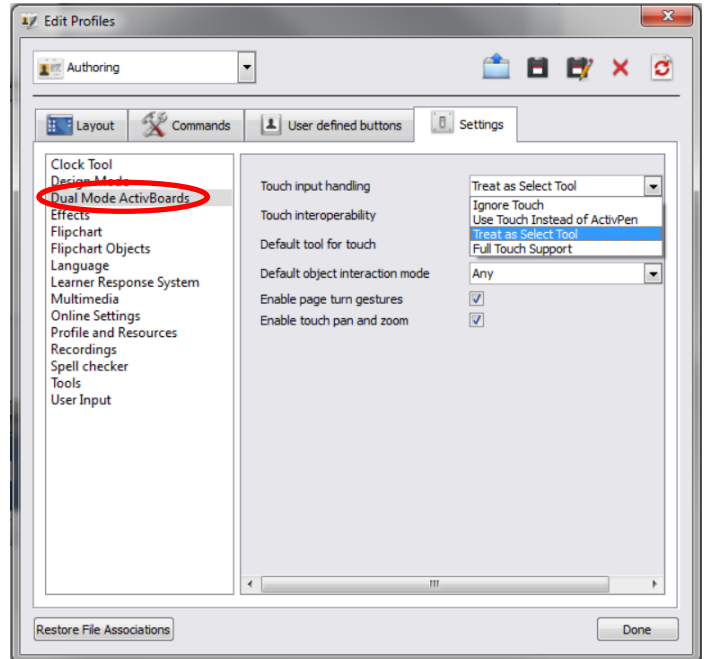


# Setting Up the Year 3 MultiTouch ActivBoard 500


## Setting Up ActivInspire for Touch

1. Now that your computer is set to handle the MultiTouch functions, ActivInspire will need to be set up, as well. You have some choices here.
2. In ActivInspire, click on File. In the Menu, click on Settings. It's usually the second option from the bottom.

3. Your Settings Dialog Box will open. Find the "Dual Mode ActivBoards" option in the sidebar. Note: These options are not always in the order pictured here.



4. The choices here are under the "Touch Input Handling" dropdown. They are as follows:

- a. Ignore Touch: this means the board will not read your finger at all. You will only be able to use the ActivPen to control the board.
- b. Use Touch Instead of ActivPen: This is the opposite—you will only be able to use your finger and the pen will be ignored.
- c. Treat as Select Tool: this is referring to your finger. You will only be able to use your finger as the Select Tool,  or the black arrow on your ActivInspire toolbar. This means you will be able to select objects and move them, but you won't be able to draw or write with your finger. You also will not be able to perform advanced functions with your finger.
- d. Full Touch Support: This means you will have full control over the board with both the ActivPen and with your finger.

5. If you choose Full Touch Support, your Toolbar will dramatically change to accommodate the full use of both your pen and your finger to control the board. You will be able to use two tool simultaneously—one with your pen and the other with your finger. In this example, the ActivPen is being used as the Pen, while the finger is being used as the Select Tool.

6. If you want to modify your tool (changing color and pen width, for example), you will have to choose what you want to modify first—your finger or your pen.

